

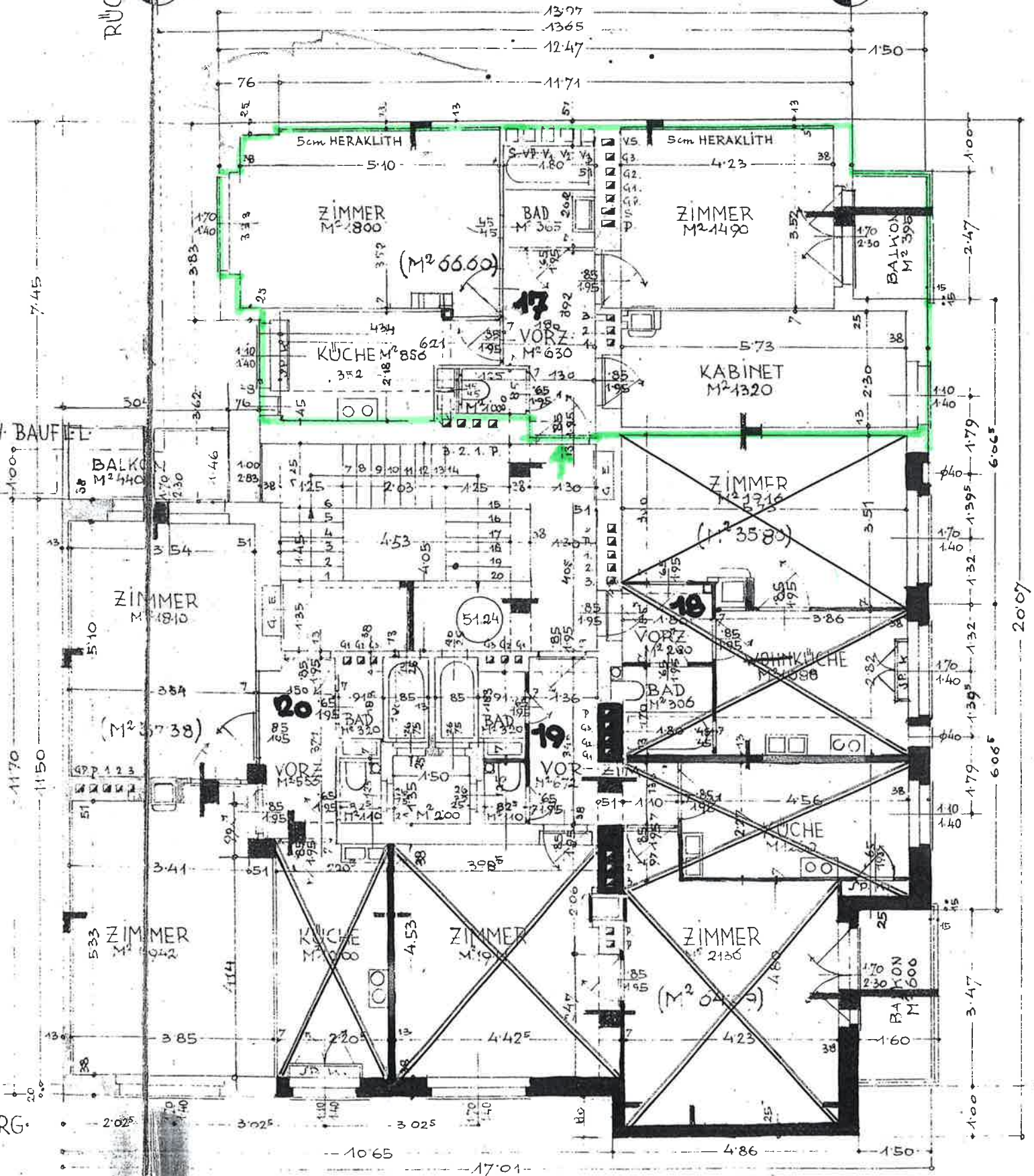
# 1.2. STOCK WERK.

Pyrkergasse 2a Top 17

65,61 m<sup>2</sup>

RÜCKW. BAUFEL.

BAUFEL.



2. STOCK = 3. STOK (= 1. STOK)		DACHGESCHOS	
17 = 13 = 21 = 65,61		ATELIERZI.. 20,40	ATELIER.. 41,70
18 = 14 = 22 = 25,90		ATELIERZI.. 15,70	WASCHKÜ. 15,30
19 = 15 = 23 = 64,09		WASCHR.(WC) 3,27	WC..... 1,00
20 = 16 = 24 = 57,37		VORZI..... 2,33	TROCK.BO. 32,00
21 = 17 = 25 = 47,70			DACHBOD. 132,00
22 = 18 = 26 = 23,00			VERK.FL. 23,00
23 = 19 = 27 = 23,00			
24 = 20 = 28 = 23,00			
25 = 21 = 29 = 23,00			

2007